

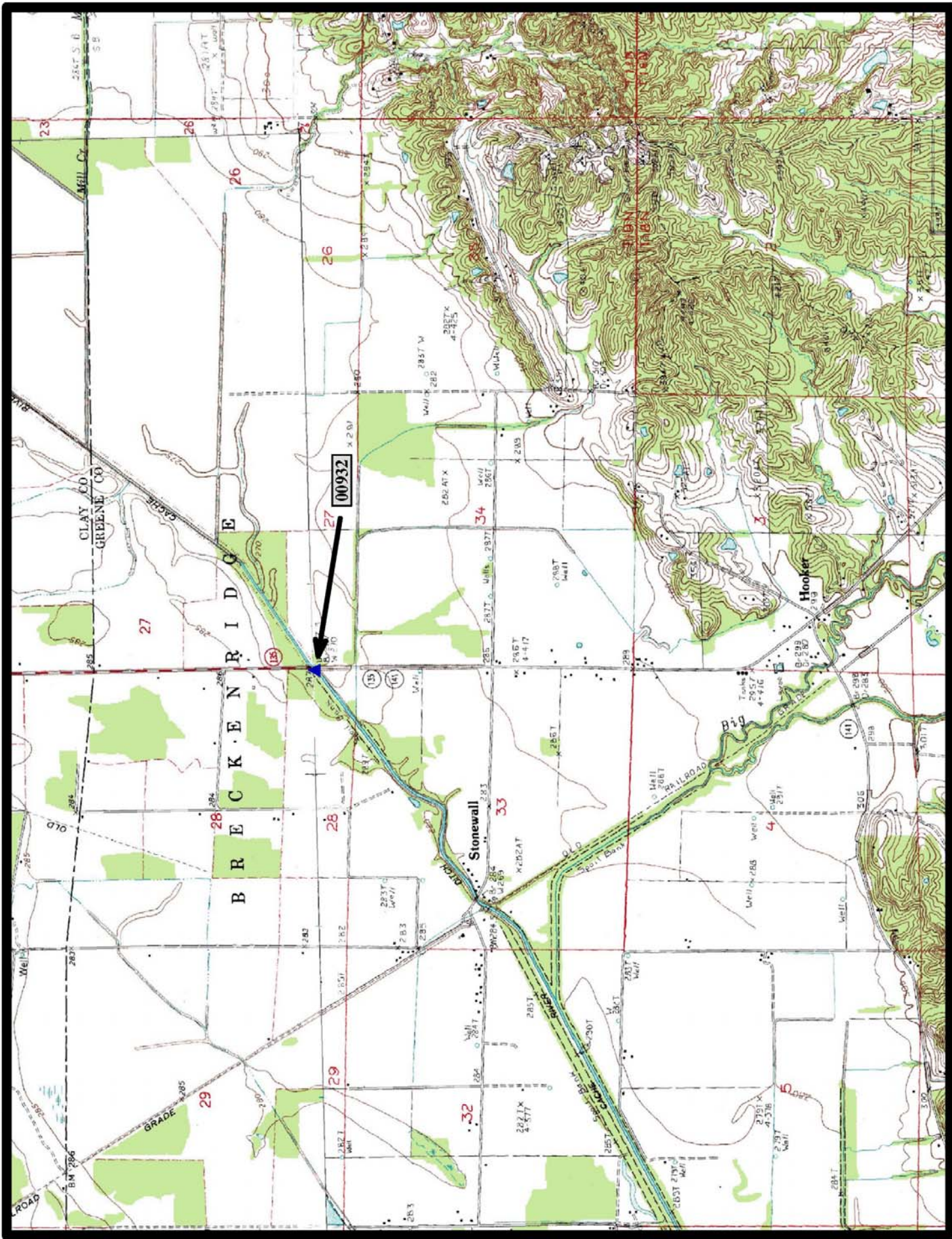
- ▲ In-Service Parker Pony Truss (15)
- ⊘ Demolished NR Parker Pony Truss (1)
- Preserved Parker Pony Truss (1)

## Parker Pony Truss Bridges





**HISTORIC BRIDGE #00932**  
**STATE HIGHWAY 135**  
**GREENE COUNTY**  
**PARKER PONY TRUSS**  
**CROSSES - CACHE RIVER DITCH**  
**DATE OF CONSTRUCTION - 1929**  
**BUILDER - MILLER'S GARAGE & CONSTRUCTION COMPANY, ST. LOUIS, MO**  
**HISTORIC BRIDGE INVENTORY DATE - 2005**  
**SHPO NUMBER - GE0317**  
**HAER NUMBER -**  
**DATE LISTED ON NATIONAL REGISTER -**  
**LAT./LONG. 33:05:58.48, -90:32:05.56**

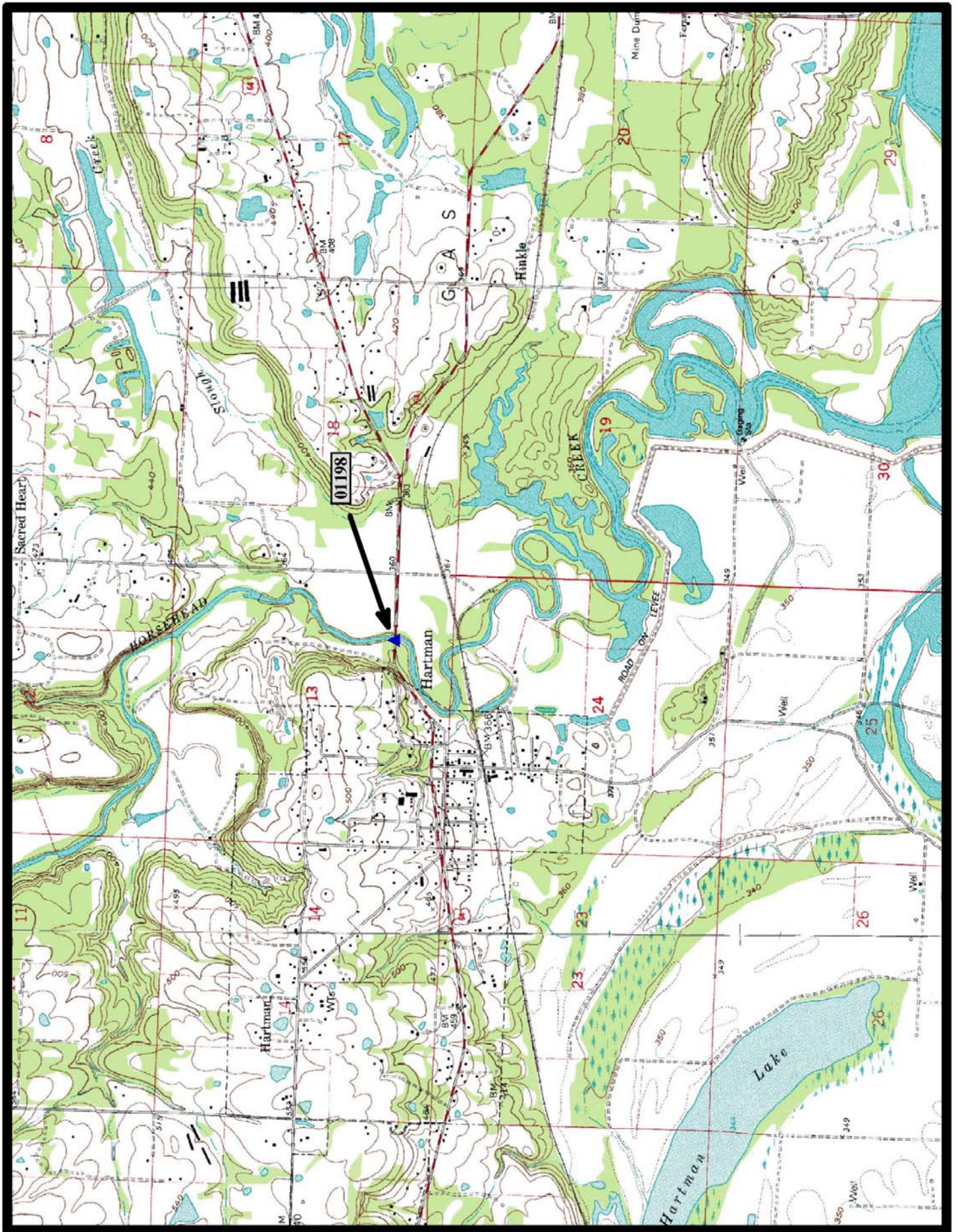


North

Life 7.5 min. Quad



**HISTORIC BRIDGE #01198**  
**US HIGHWAY 64**  
**JOHNSON COUNTY**  
**PARKER PONY TRUSS**  
**CROSSES - HORSEHEAD CREEK**  
**DATE OF CONSTRUCTION - 1941**  
**BUILDER - FRED LUTTJOANN, TOPEKA, KS**  
**HISTORIC BRIDGE INVENTORY DATE - 1995**  
**SHPO NUMBER - JO0121**  
**HAER NUMBER -**  
**DATE LISTED ON NATIONAL REGISTER -**  
**LAT./LONG. 35:26:06.02, -92:36:21.76**



↑  
North

Hartman 7.5 min. Quad



**HISTORIC BRIDGE #01381**

**US HIGHWAY 67**

**CLARK COUNTY**

**PARKER PONY TRUSS**

**CROSSES - LITTLE MISSOURI RIVER**

**DATE OF CONSTRUCTION - 1931**

**BUILDER - VINCENNES BRIDGE COMPANY, VINCENNES, IN**

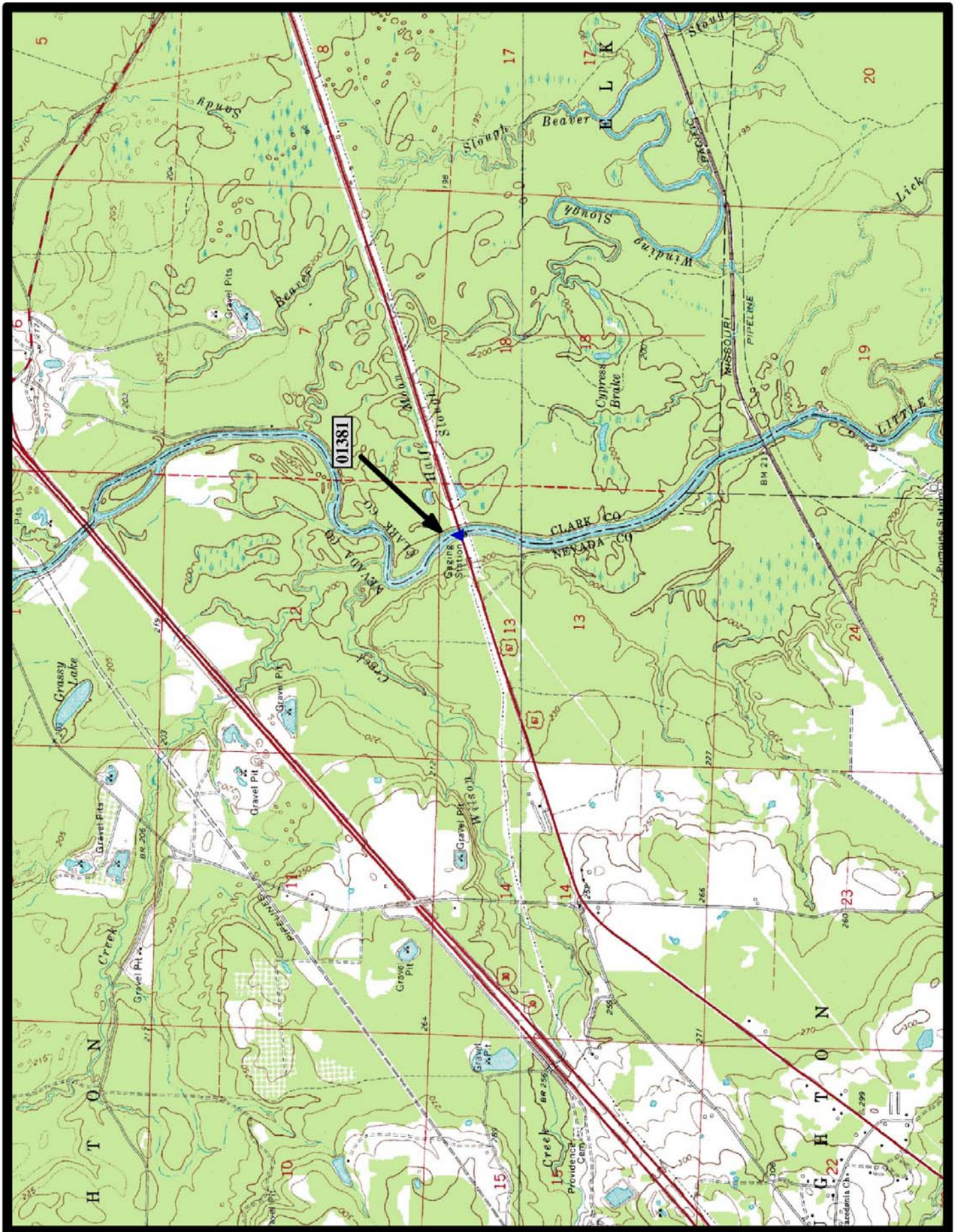
**HISTORIC BRIDGE INVENTORY DATE - 1995**

**SHPO NUMBER - CL0949**

**HAER NUMBER -**

**DATE LISTED ON NATIONAL REGISTER - 1/24/2007**

**LAT./LONG. 33:52:42.11, -93:18:15.67**



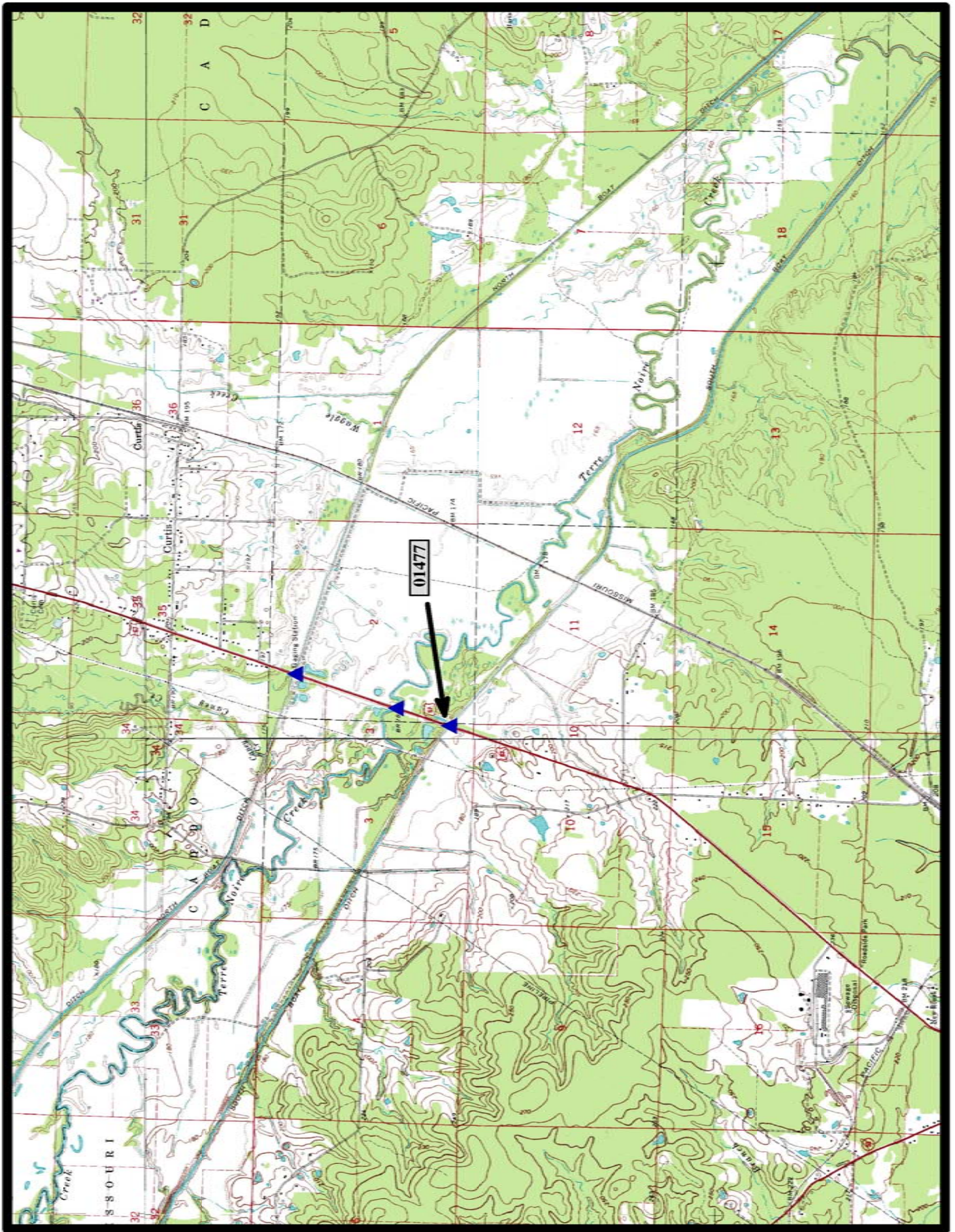
↑  
North

Okolona South 7.5 min. Quad





**HISTORIC BRIDGE #01477**  
**US HIGHWAY 67**  
**CLARK COUNTY**  
**PARKER PONY TRUSS**  
**CROSSES - SOUTH BOAT DITCH**  
**DATE OF CONSTRUCTION - 1931**  
**BUILDER - VIRGINIA BRIDGE & IRON COMPANY, ROANOKE, VA**  
**HISTORIC BRIDGE INVENTORY DATE - 2005**  
**SHPO NUMBER - CL0951**  
**HAER NUMBER -**  
**DATE LISTED ON NATIONAL REGISTER -**  
**LAT./LONG. 33:58:40.11, -93:07:26.51**

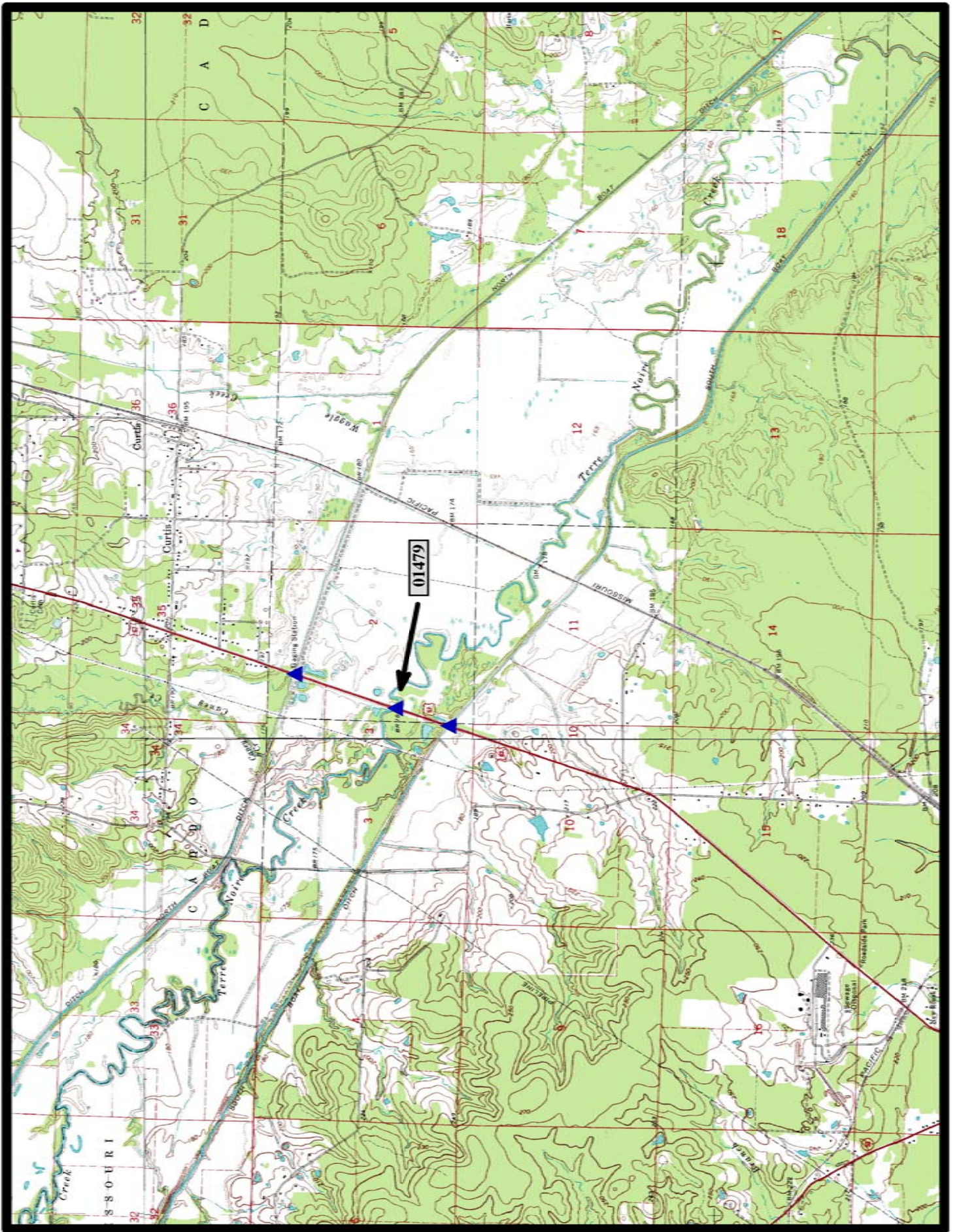


←  
North

Curtis 7.5 min. Quad



**HISTORIC BRIDGE #01479**  
**US HIGHWAY 67**  
**CLARK COUNTY**  
**PARKER PONY TRUSS**  
**CROSSES - TERRE NOIR CREEK**  
**DATE OF CONSTRUCTION - 1931**  
**BUILDER - VIRGINIA BRIDGE & IRON COMPANY, ROANOKE, VA**  
**HISTORIC BRIDGE INVENTORY DATE - 2005**  
**SHPO NUMBER - CL0952**  
**HAER NUMBER -**  
**DATE LISTED ON NATIONAL REGISTER -**  
**LAT./LONG. 33:58:54.03, -93:07:20.92**



↑  
North

Curtis 7.5 min. Quad